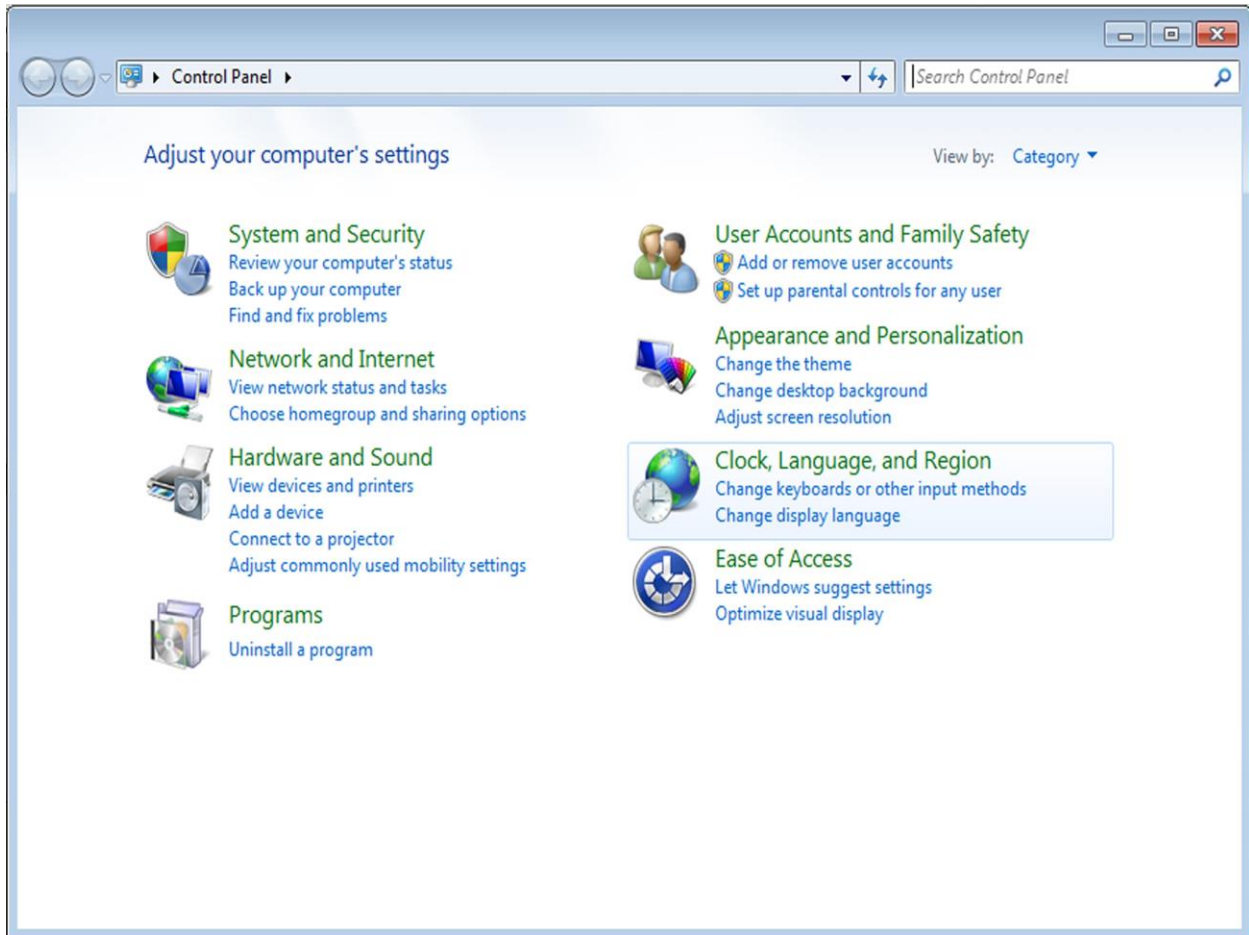


# CIS Windows 7 VPN Setup Guide

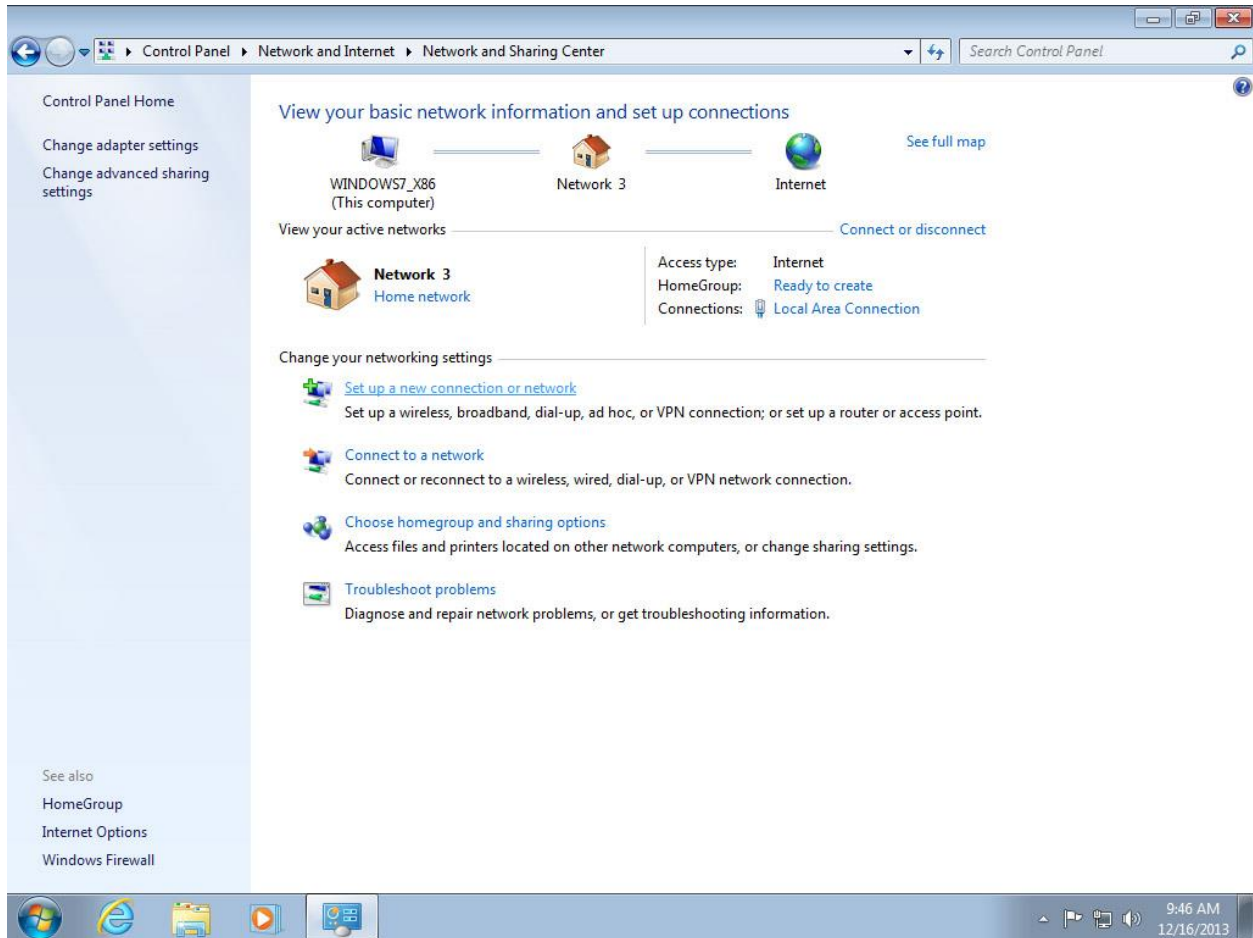
---

**STEP 1** – Open the "Network and Sharing Center". Found in the Control Panel under "Network and Internet".



# CIS Windows 7 VPN Setup Guide

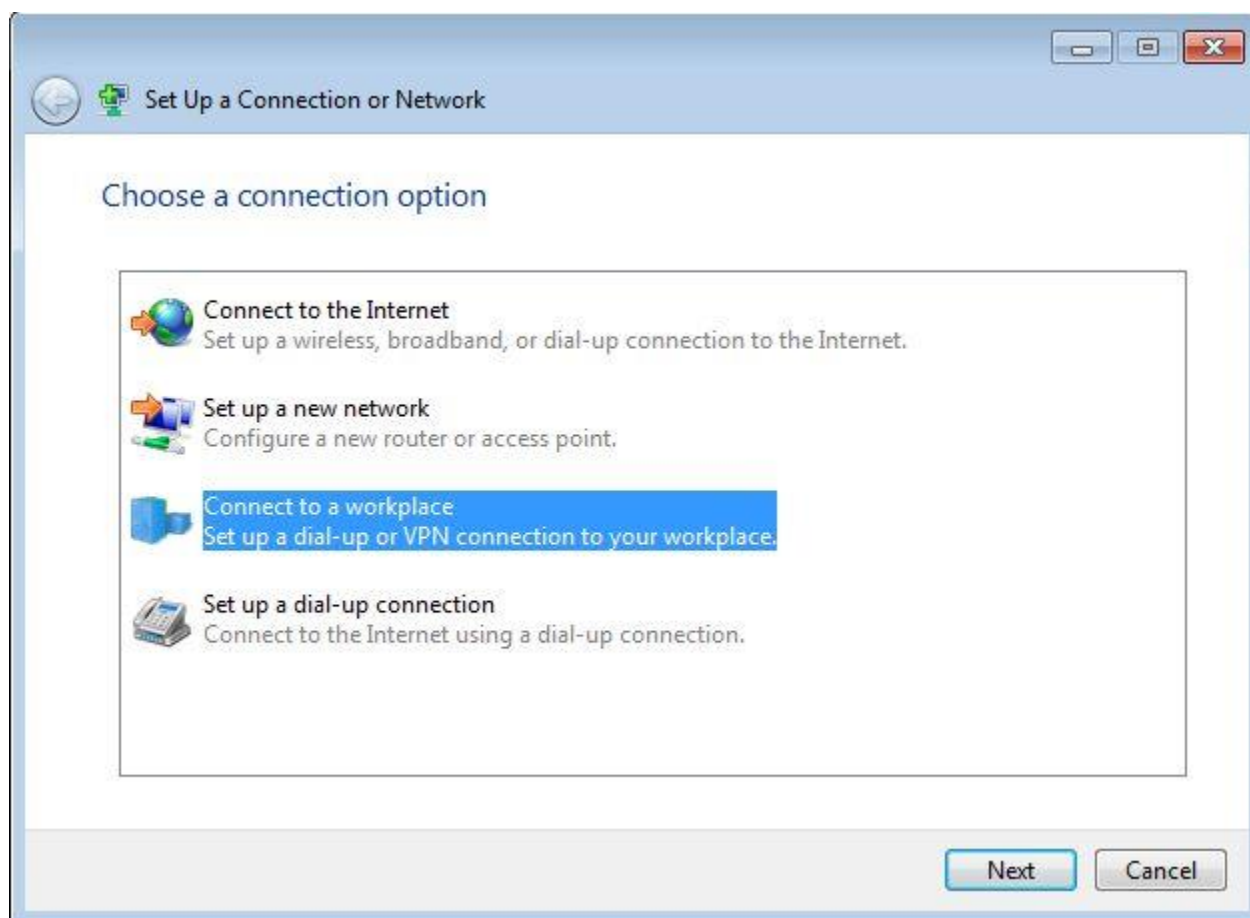
STEP 2 – Select "Set up a new connection or network".



# CIS Windows 7 VPN Setup Guide

---

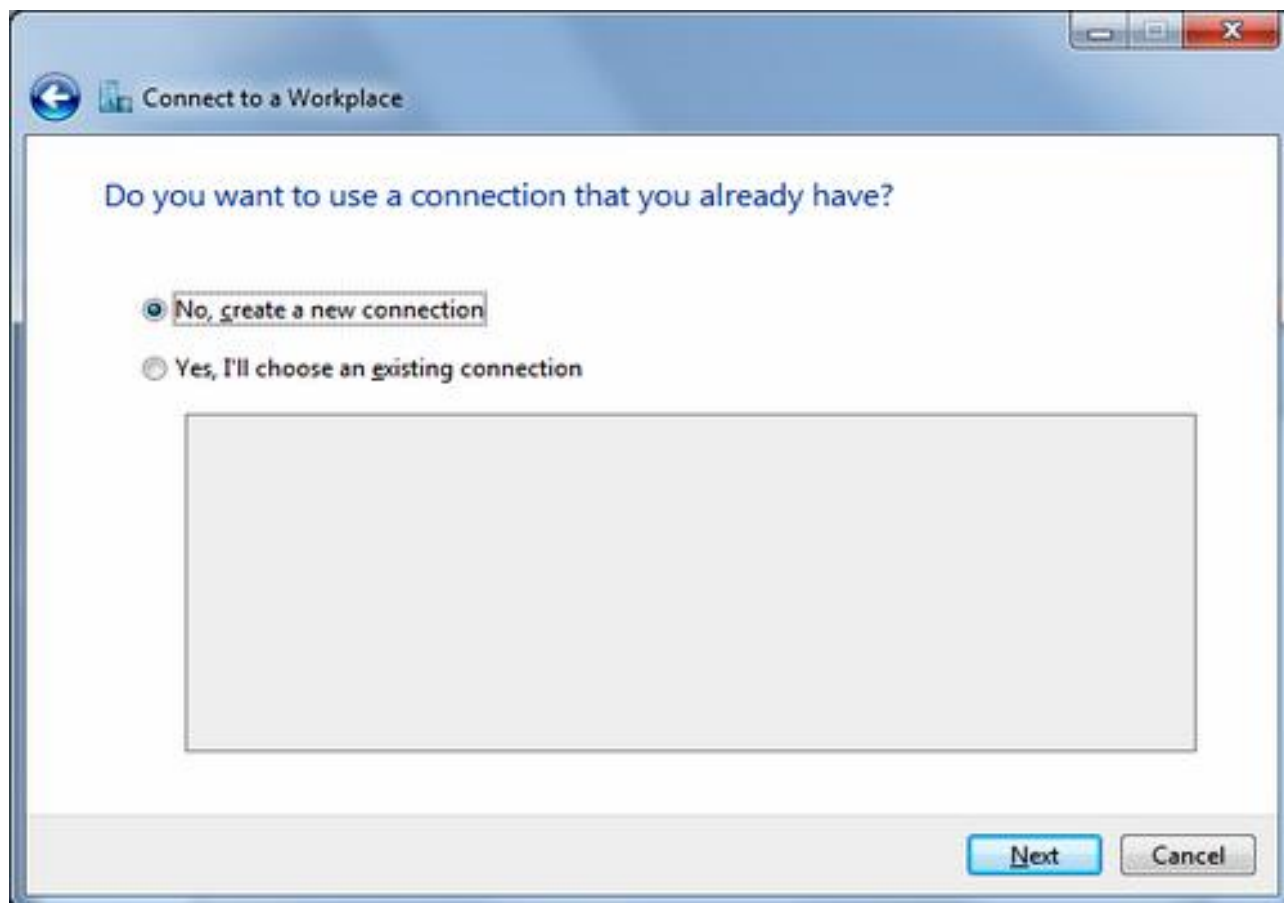
STEP 3 – Select the connection type: "Connect to a workplace".



# CIS Windows 7 VPN Setup Guide

---

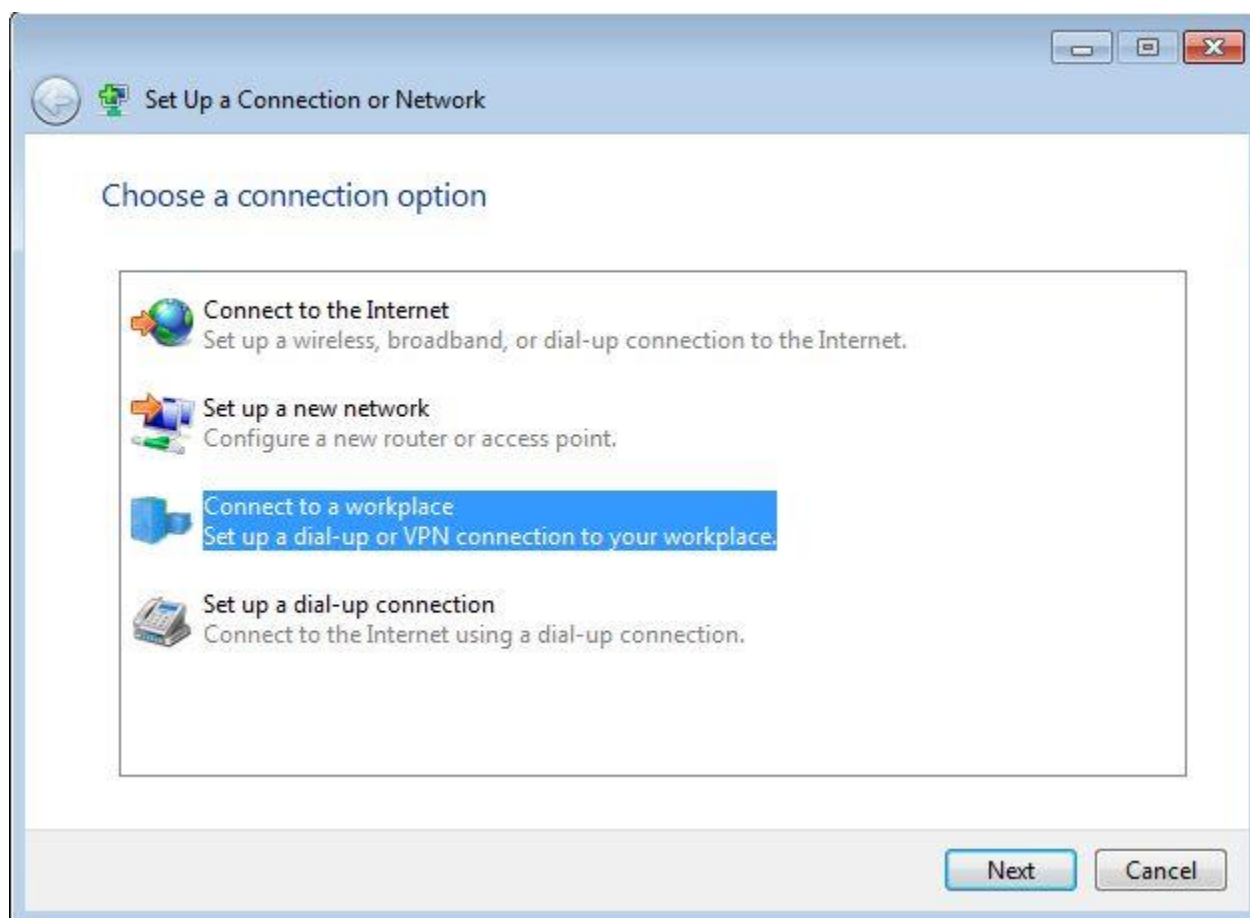
STEP 4 – If other connections are already configured, select "Create a new connection".



# CIS Windows 7 VPN Setup Guide

---

STEP 5 – Select “Use my Internet Connection (VPN)”.



# CIS Windows 7 VPN Setup Guide

---

STEP 6 – Fill out any name, then provided server address

Create a VPN connection

Type the Internet address to connect to

Your network administrator can give you this address.

Internet address:

Destination name:

Use a smart card

Allow other people to use this connection  
This option allows anyone with access to this computer to use this connection.

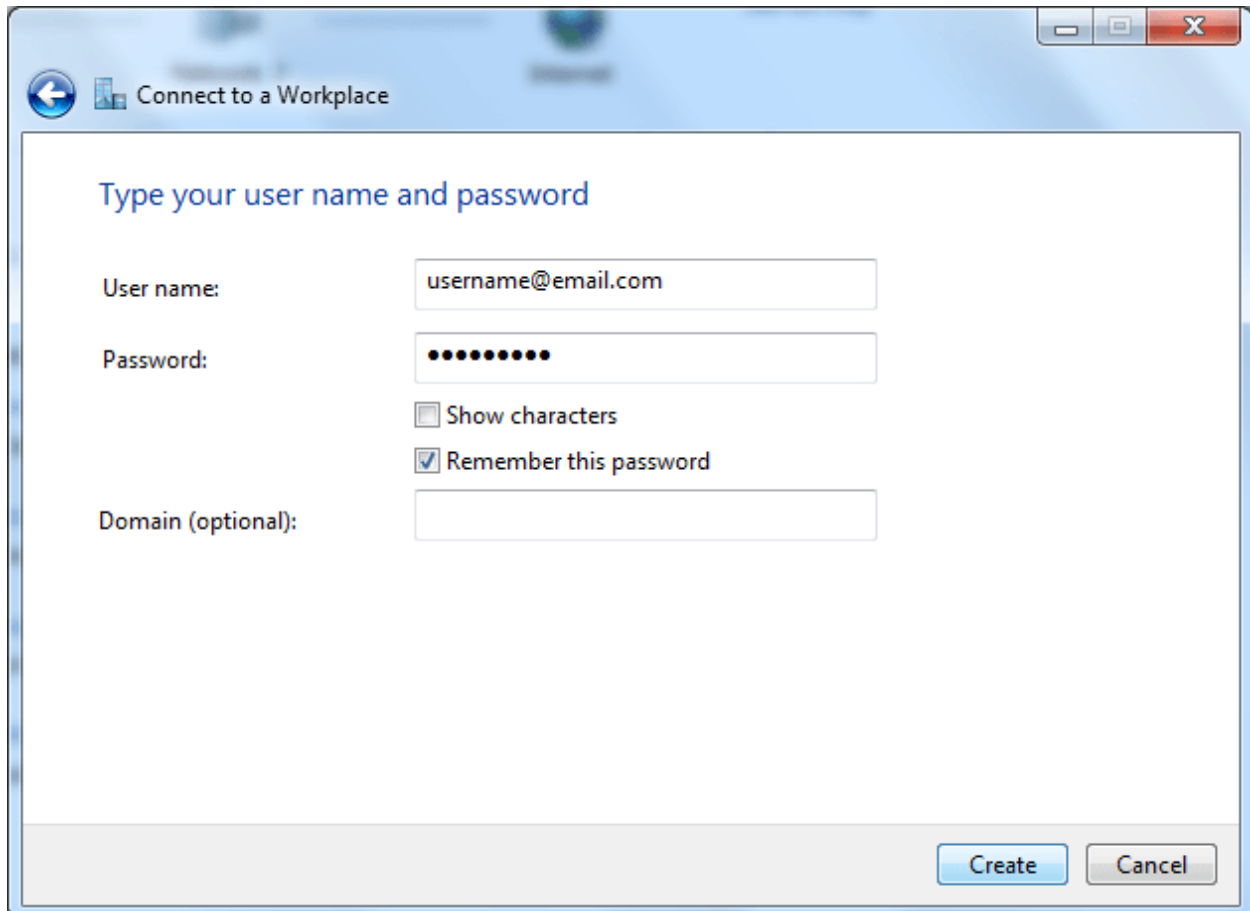
Don't connect now; just set it up so I can connect later

Next Cancel

# CIS Windows 7 VPN Setup Guide

---

STEP 7 – Fill username and password information.



Connect to a Workplace

Type your user name and password

User name:

Password:

Show characters

Remember this password

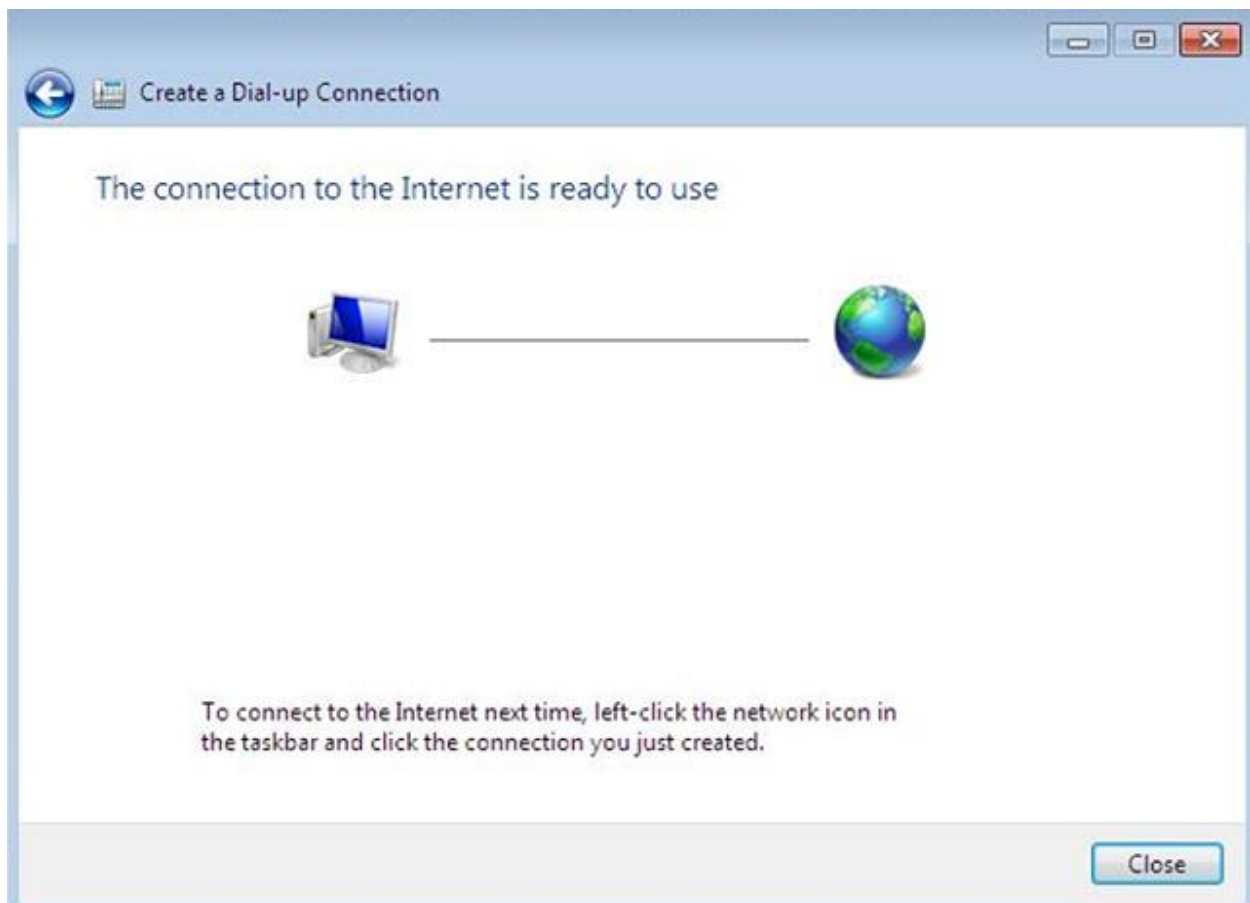
Domain (optional):

Create Cancel

# CIS Windows 7 VPN Setup Guide

---

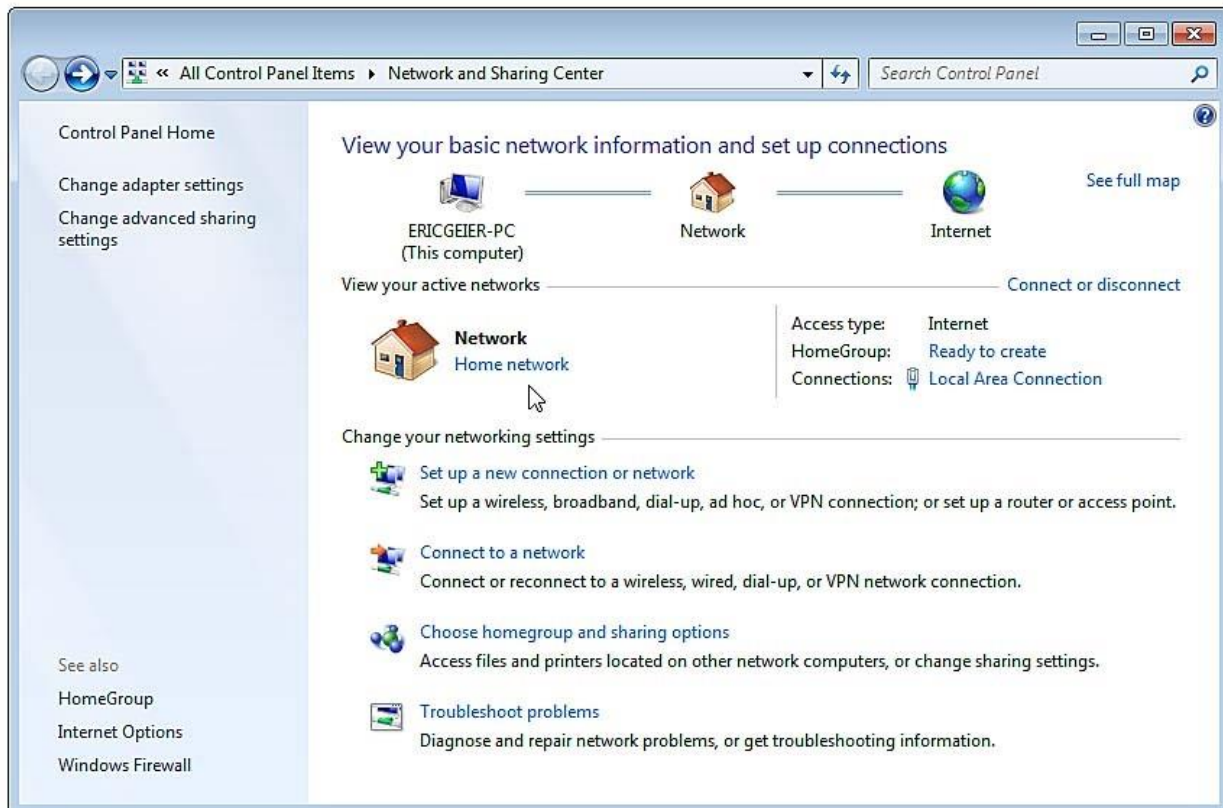
STEP 8 – Close the window.





# CIS Windows 7 VPN Setup Guide

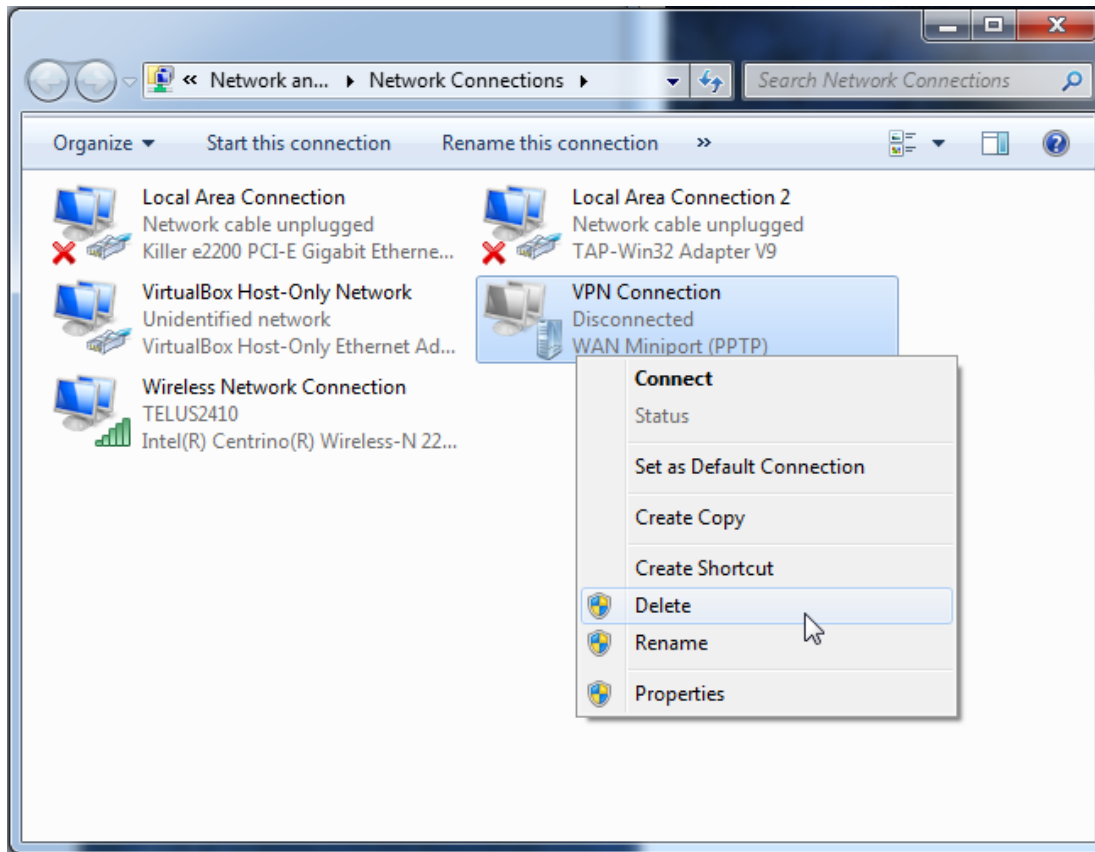
**STEP 9** –Go back to the "Network and Sharing Center" to modify your new VPN connection's settings.



# CIS Windows 7 VPN Setup Guide

---

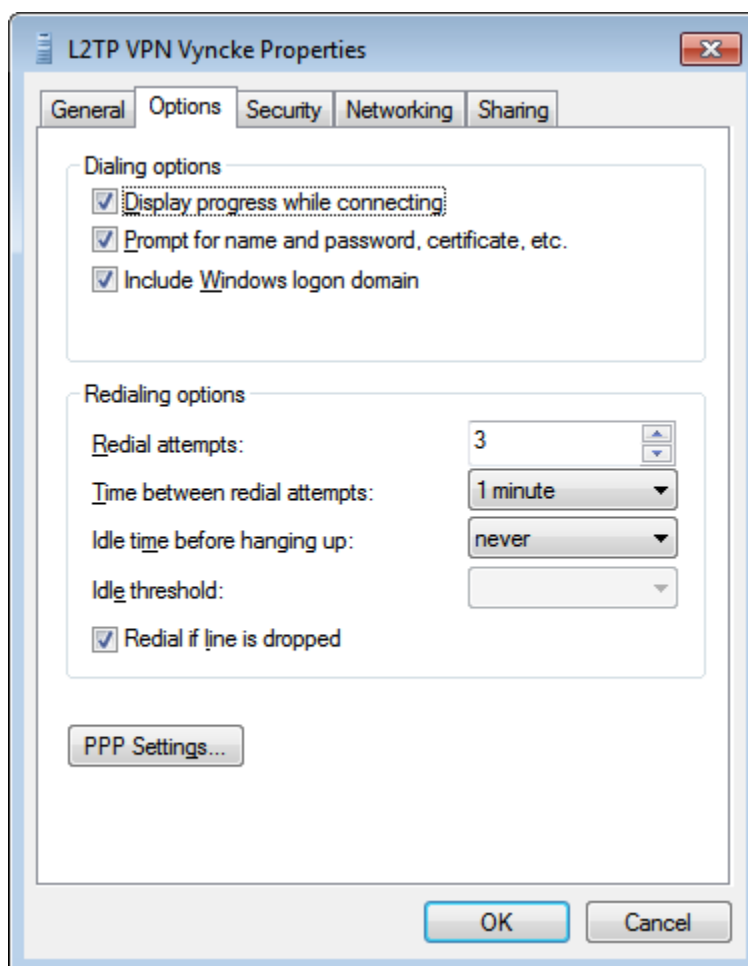
STEP 10 – Right click on VPN connection and open VPN properties.



# CIS Windows 7 VPN Setup Guide

---

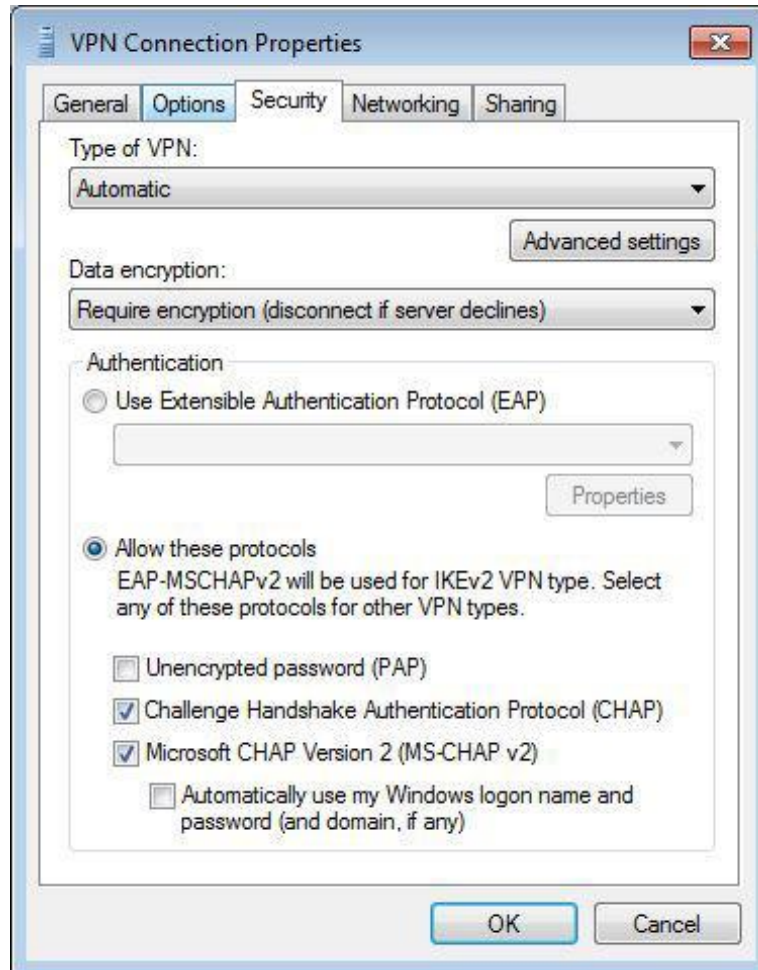
STEP 10 – In the "Options" tab, uncheck the Windows Domain box.



# CIS Windows 7 VPN Setup Guide

---

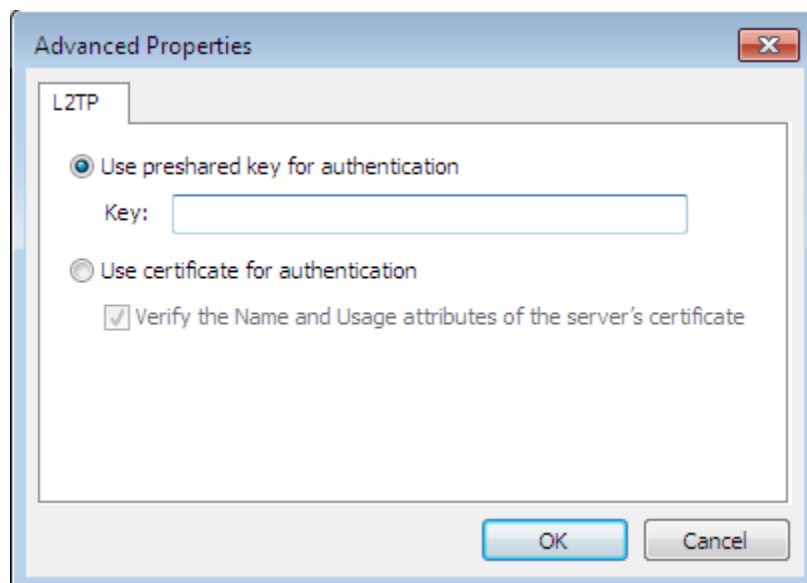
STEP 11 – On the "Security" tab. VPN Type: L2TP/IPSec.



# CIS Windows 7 VPN Setup Guide

---

**STEP 12** – Staying on the "Security" tab, click VPN Advanced Settings by selecting the "Pre-shared key" option.



# CIS Windows 7 VPN Setup Guide

---

STEP 13 – From the “Network and Sharing Center”, click on “Connect to a network” and select your connection.

