

Welcome

Thank you for choosing CIS! This quick setup guide will assist you with getting your CIS router up and running. For more detailed configuration, please check the user manuals located on our website. If you have any questions, please do not hesitate to contact our support team.

Overview

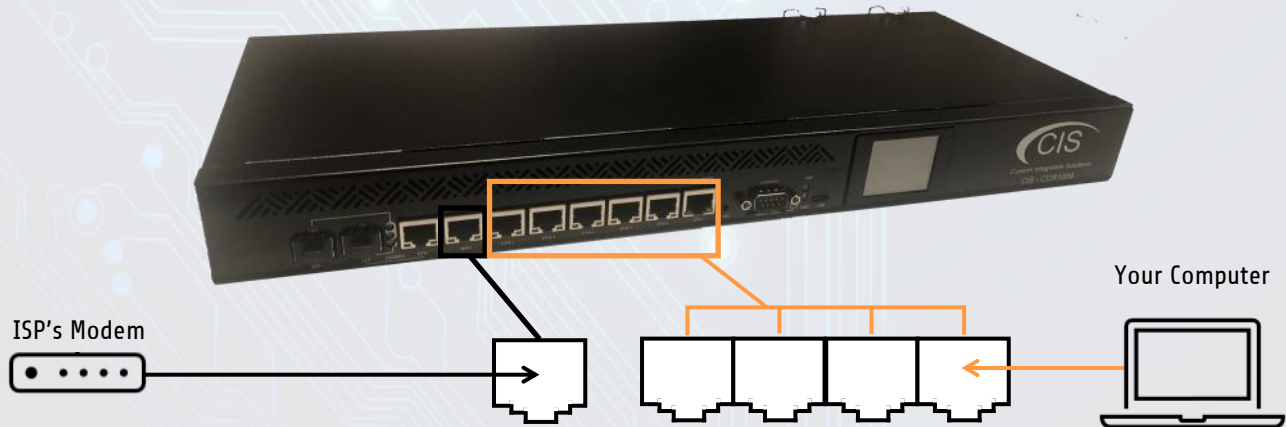
With a 9 core x 1.2 GHz CPU and 2 GB of RAM, the CIS-CIS-CCR1009 is the most powerful and capable router in our lineup. The 7 Gigabit Ethernet ports are connected directly to the CPU, overcoming the bandwidth limitations of routers that utilize a switch chip. An SFP+ port provides 10 Gigabit connectivity to your switches. A 1 Gigabit combo port accepts either SFP or Gigabit Ethernet connections.

Powering the Router



Connect a power cable to the rear of the device, or use PoE in on ETH7 labelled “PoE/Boot.”
For maximum uptime, connect a second power cable to a UPS or second circuit.

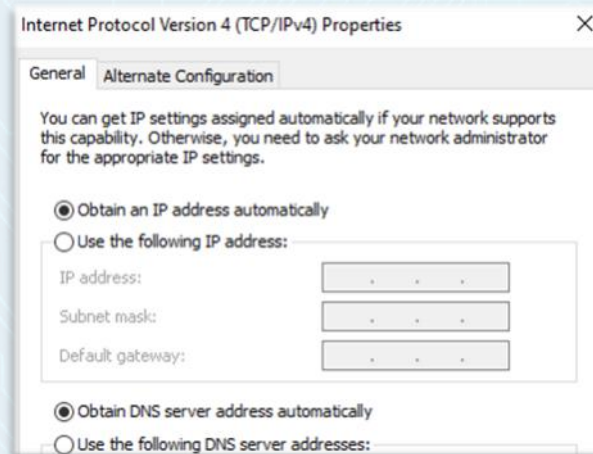
Initial Configuration



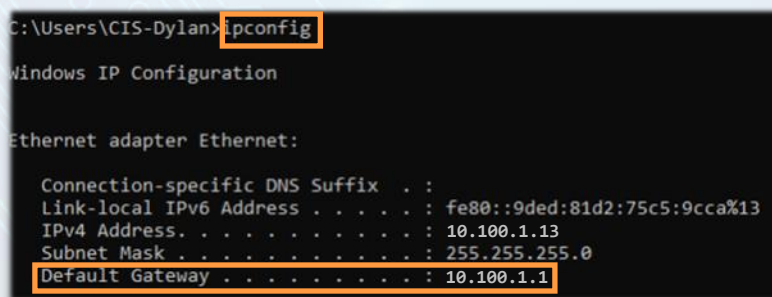
Connect your ISP's modem to the **WAN** port. Connect your laptop or computer to any of the remaining ports.

Configuring the Router

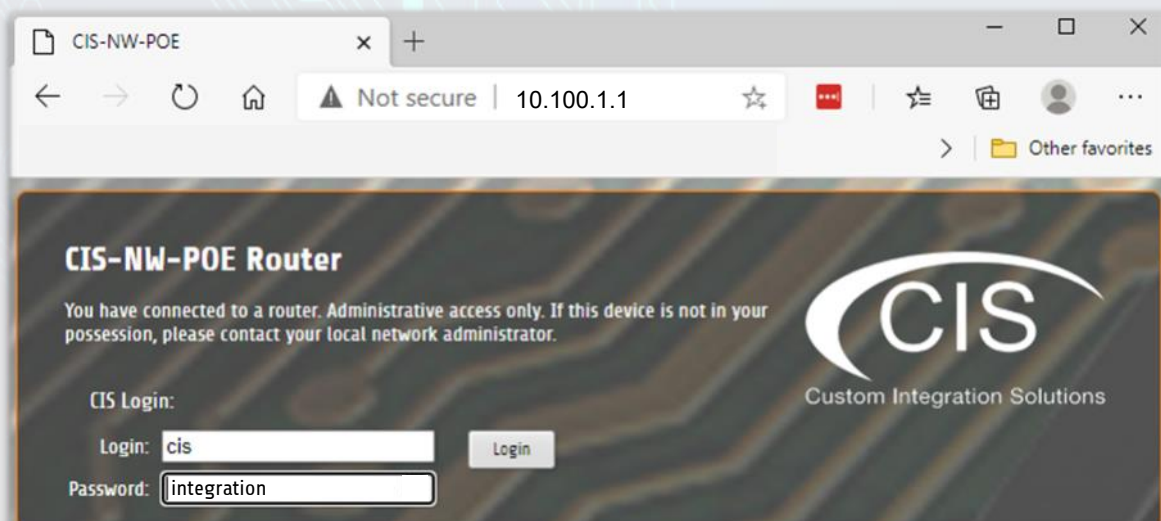
1. Ensure that your computer's IP configuration is set to "Automatically Obtain an IP Address." On OSX, set your Ethernet adapter to "Using DHCP"



2. Obtain the IP Address of the **Default Gateway**. CIS Routers use **10.100.1.1** as the default. You can open a **command prompt** on a Windows machine and enter **ipconfig** to get the default gateway.



3. Open a web browser and navigate to the IP address of your default gateway. The default username is **cis** and the default password is **integration**.



Reset Button

Hold this button while the device is powered off, then apply power. Keeping holding until the USB LED light starts flashing, (5 seconds) then release the button to reset to the default CIS configuration. You can use this procedure if you have forgotten the password to access the device, or simply wish to return the unit to its default configuration state.

Warranty Information

Custom Integration Solutions™ products have a 2-Year Limited Warranty. This warranty includes parts and labor repairs on all components found to be defective in material or workmanship under normal conditions of use. This warranty shall not apply to products that have been abused, modified, or disassembled. Products to be repaired under this warranty must be returned to Custom Integration Solutions™ or a designated service center with prior notification and an assigned return authorization (RA) number.

Contact Information Web: www.custom-integration-solutions.com

Phone: Technical Support - (888) 976-3651



The CIS-CCR1009 is in compliance with the essential requirements and other relevant provisions of Directive 2014/53/EC.